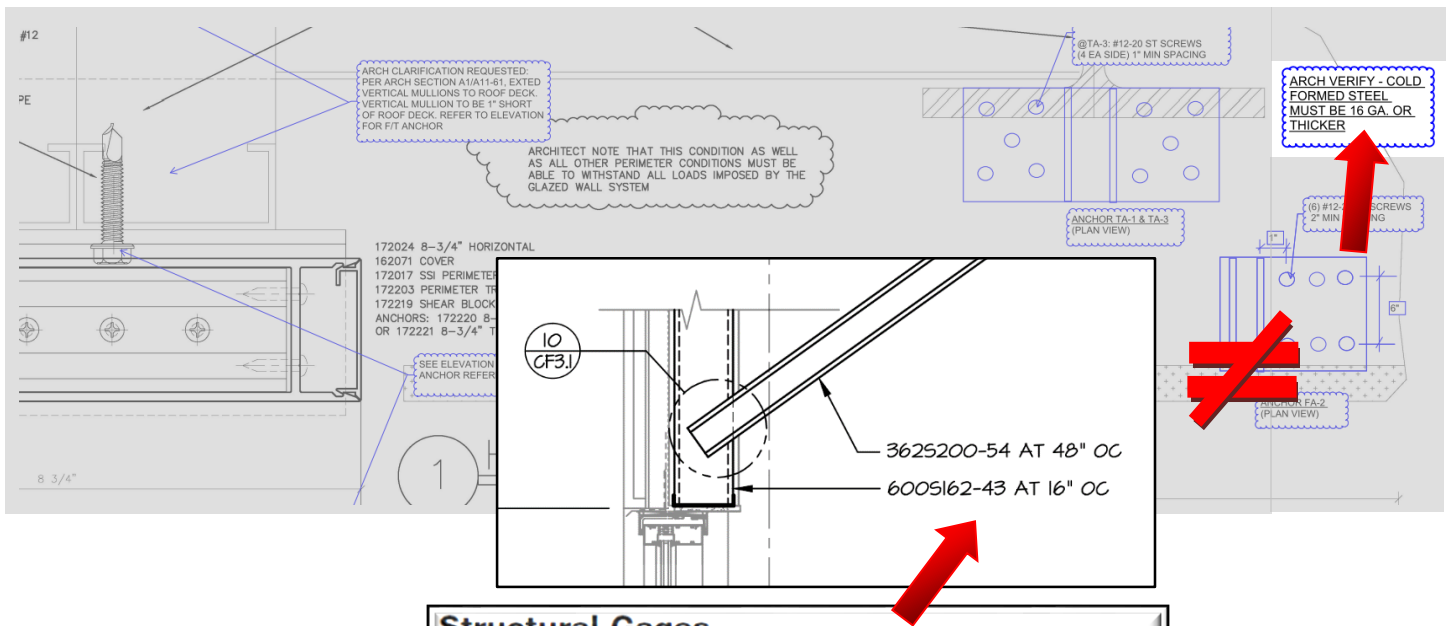




Most window attachment calculations assume 16ga material to attach too...such as the header, top track, or sill of an opening.

We need to review this information with the CFMF Contractor and the Window Contractor to confirm assumptions.

If the CFMF design is 18ga, the window calculations would need to match this design, most likely with more fasteners or sizing up the fastener to meet the design/transfer loads of the window...or...increase the size of the framing (added cost).



Structural Gages					
Steel Thickness		Design Thickness		Minimum Thickness	
Gage	Mils	in.	mm.	In.	mm
20	33	0.0346	0.88	0.0329	0.84
18	43	0.0451	1.14	0.0428	1.08
16	54	0.0566	1.44	0.0538	1.37
14	68	0.0713	1.81	0.0677	1.72
12	97	0.1017	2.58	0.0966	2.45

We have been typically finding these discrepancies at the Pre-Installation meeting... which is too late...

Try and get everyone on the same page prior to the completion of the shop drawings and calculations...if we find out that there is a discrepancy, the result will likely be an added cost and/or possibly have a time implication associated with the change.

